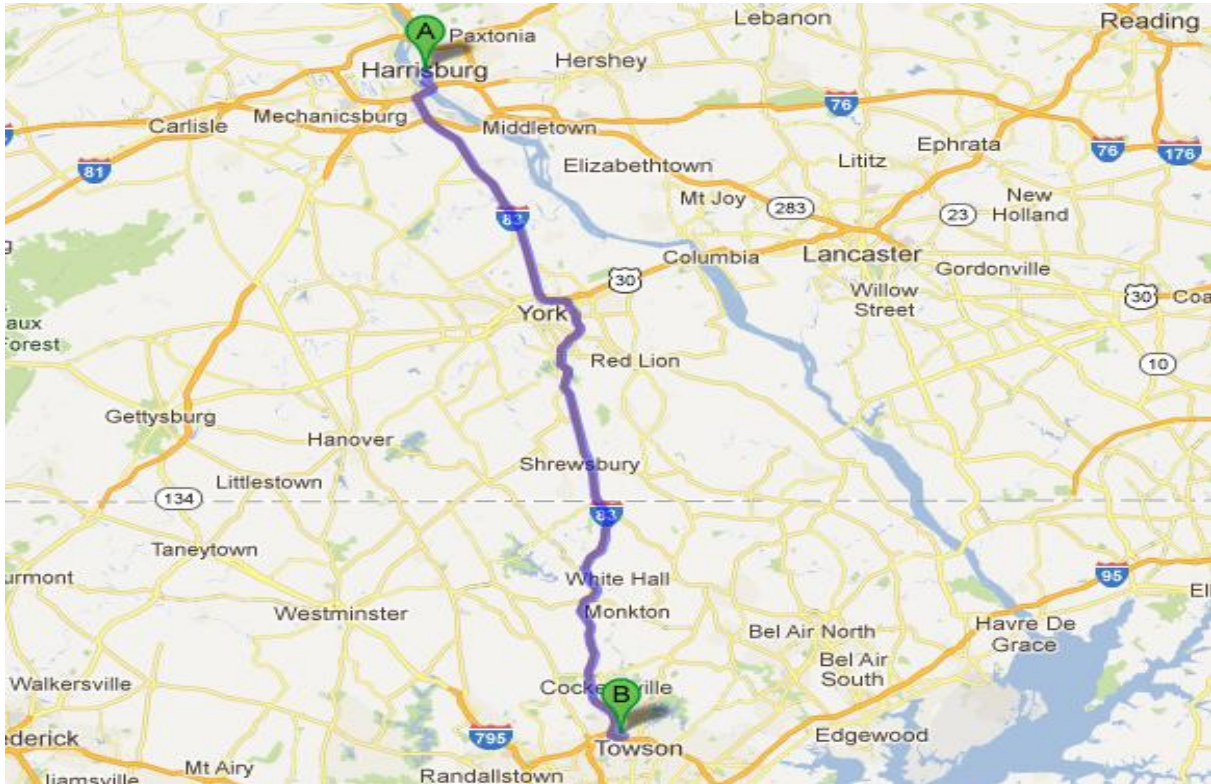


DIRECTIONS FROM THE NORTH VIA I-83 (PENNSYLVANIA) *Average time 45 minutes*



1. Head south on **I-83 S** towards Baltimore, Maryland

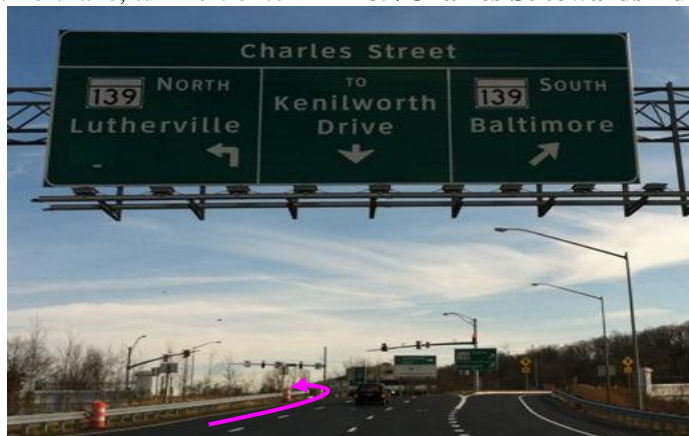
2. Take the **I-695 E** exit on the left toward **Towson**



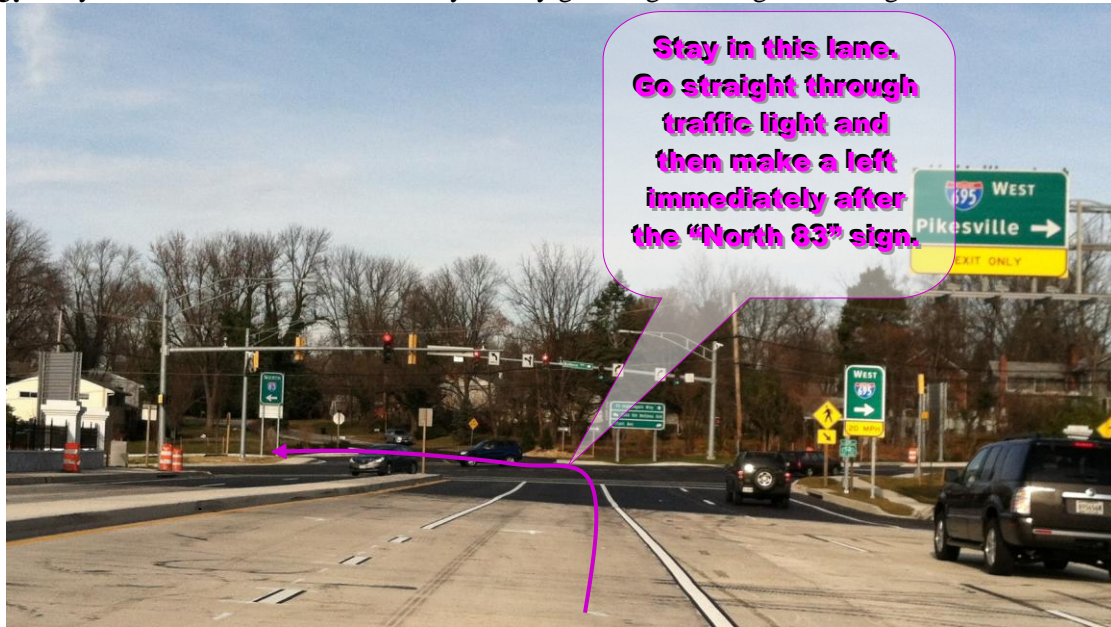
3. Keep right at the fork to continue toward **MD-139 /Charles St**



4. Stay in your far left lane, turn left onto **MD-139/Charles St towards Lutherville**



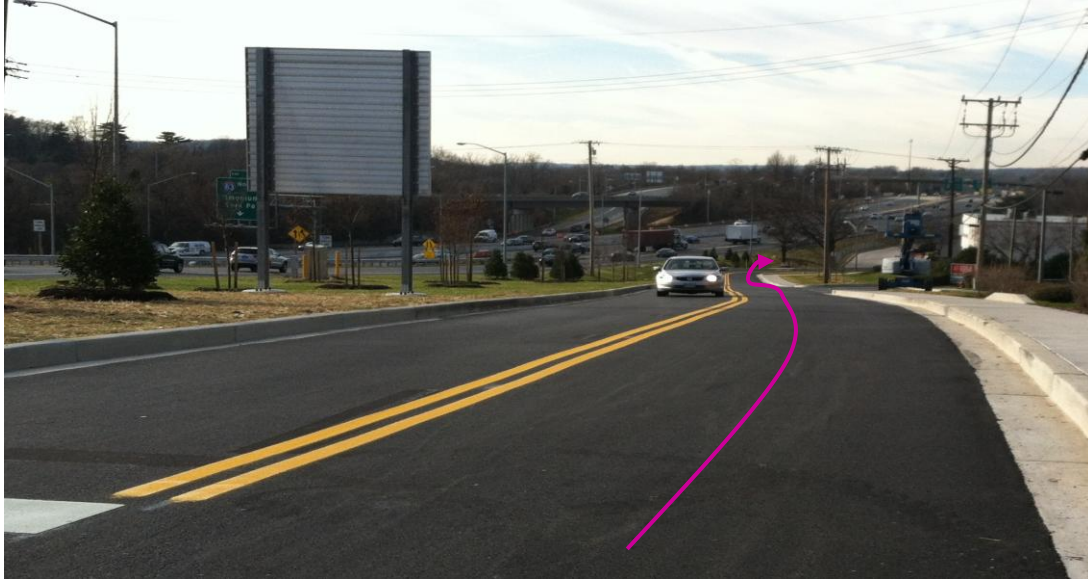
5. Stay in the second left lane so that you may go straight through traffic light



6. Make the left onto Bellona Avenue, you will see the entrance to I695W on your left.



7. Go straight down Bellona Avenue, on your right you will see the Maryland Board of Realtors Building, and on your left you will see I-695/Baltimore Beltway West. Go to the bottom of the road.



8. Road curves right into Bellona Commons.



- 9. At Bellona Commons make an immediate left turn.



- 10. Go to the end of the drive



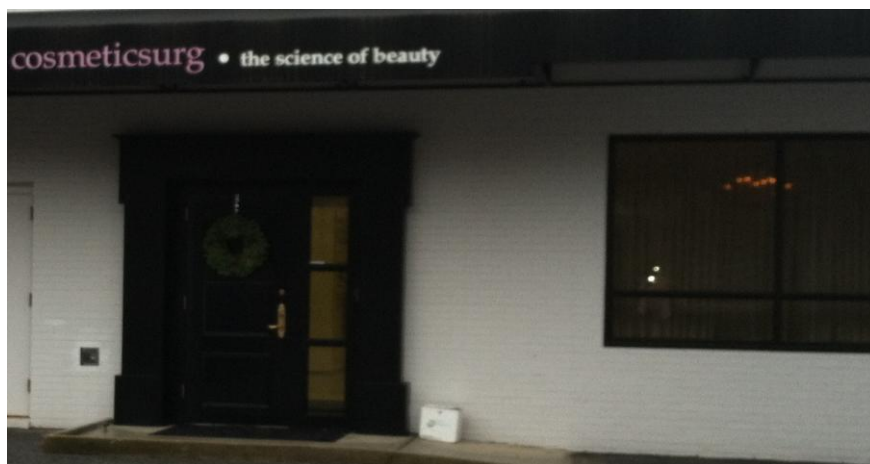
11. Make a right a right at the Spine Center



12. Go pass the Gastroenterology Associates and make another right



13. You will see **CosmeticSurg . the science of beauty**, Suite C, Dr. Rodriguez' office, entrance on the right



Please call us at 410-494-8100 if you need assistance with directions.